



INSTRUCTION BULLETIN

No. 340130
Machine: 4300
Published: 6-99/01
System: OPTIONS

NOTE: DO NOT DISCARD the Parts List from the Instruction Bulletin. Place the Parts List in the appropriate place in your machine manual for future reference. Retaining the Parts List will make it easier to reorder individual parts and will save you the cost of ordering an entire kit.

NOTE: Numbers in parenthesis () are reference numbers for parts listed in Bill of Materials.

Installation instructions for kit number 367605

SYNOPSIS / PROBLEM:

This kit contains the parts needed to install a road package kit on the model 4300 sweeper. Please follow step-by-step instructions.

SPECIAL TOOLS / CONSIDERATIONS: Hand drill, .218 drill bit

(Estimated time to complete: 3 hours)

PREPARATION:

(Refer to FIG. 1 and 2)

FOR SAFETY: Before leaving or servicing machine, stop on level surface and set parking brake. Then turn off machine and remove key.

1. Use the dimensions in Fig. 1 and 2 to mark and drill the mount holes for the front lights (1) on the left and right machine panels. (Refer to FIG. 1 and 2)

INSTALLATION:

(Refer to FIG. 3 and 4)

1. Install the two light assemblies (1) onto the front of both machine panels using the pan screw (4), lock washer (3), flat washer (2), and nuts (5). (Refer to FIG. 3)
2. Install the turn signal assembly (6) onto the steering column using the worm drive clamp (7). (Refer to FIG. 3)
3. Install the flasher mount bracket (9) onto the front panel channel using the pan screw (10) and nyloc nut (11). Snap the flasher (8) into the mount bracket (9). (Refer to FIG. 3)
4. Install the brake roller switch (12) onto the side of the operators compartment using the two screws (14), flat washers (2), steel sleeves (13), and nyloc nuts (5). (Refer to FIG. 3)
5. Install the 15 amp circuit breaker (26) into the open mount hole in the instrument panel. Install the rubber boot (27) onto the circuit breaker (26). (Refer to FIG. 3)
6. Install the brake indicator light (28) into the dash panel (second slot from the right). (Refer to FIG. 3)
7. Install the warning lamp mount bracket (22) onto the left hand hopper cover hinge. (Refer to FIG. 4)
8. Install the rubber grommet (21) into the larger hole in the top of the mount bracket (22). (Refer to FIG. 4)

9. Install the rotating lamp assembly (20) onto the top of the mount bracket (22) using the three hex screws (23), flat washers (25), and nuts (24). Route the wires from the light (20) through the rubber grommet (21). (Refer to FIG. 4)
10. Open the hopper cover. Remove the plastic liner and/or garbage bags.
11. Use the label bracket (16) as a template to mark and drill four mount holes in the center, back of the hopper assembly. (Refer to FIG. 4)
12. Attach the label plate (15) to the mount bracket (16) using the two screws (18) and flat washers (19). (Refer to FIG. 4)
13. Use the four pop rivets (17) to attach the mount bracket (16) and label plate (15) to the back of the hopper. (Refer to FIG. 4)
14. Use the mounting bracket (29) to attach the label plate (16) when equipped with the long white filter bag. (Refer to FIG. 4)

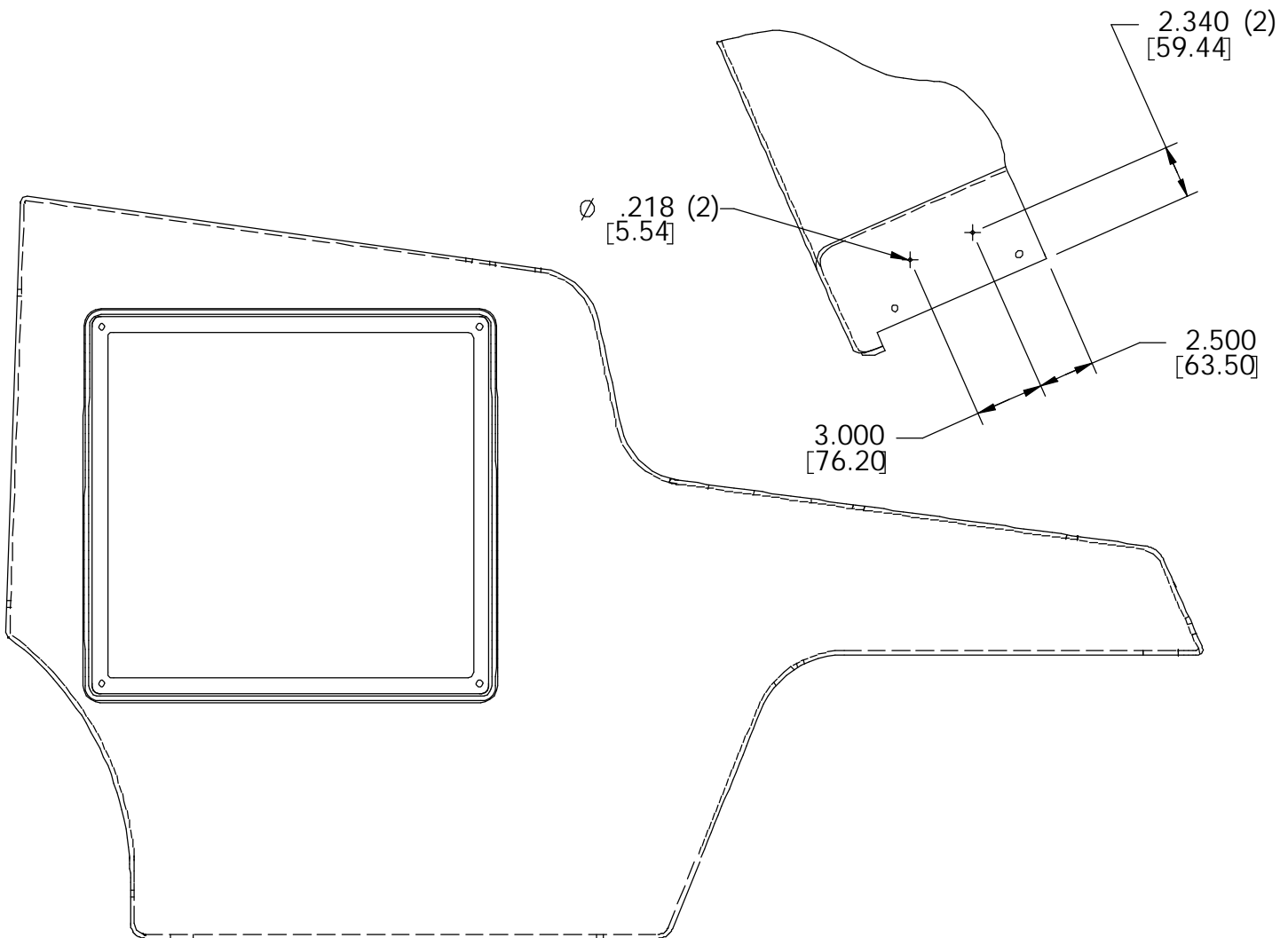


FIG. 1 - Panel, Right Hand Side

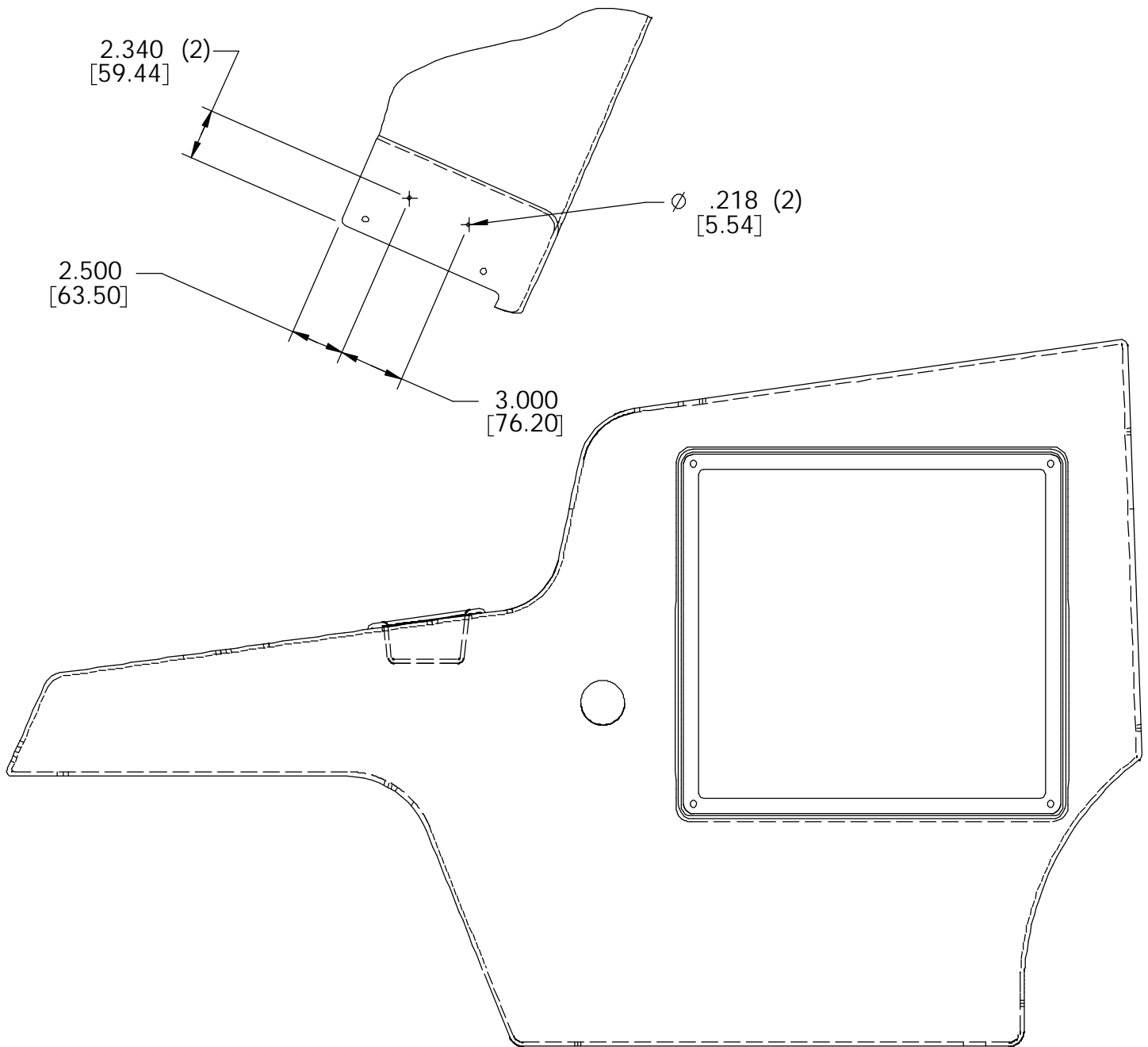


FIG. 2 - Panel, Left Hand Side

ELECTRICAL CONNECTIONS:

(Refer to FIG. 3, 4, and 5)

1. Locate the turn signal connector in the main harness under the dash panel. Cut any plastic ties holding the connector wires to the main harness. Plug the main harness connector into the connector on the turn signal assembly. (Refer to FIG. 3 and 5)
2. Locate the flasher (8) wires (31A/GRN, 33A/GRY, 33/GRY, and 34/BRN) tied up in the main harness under the dash panel. Connect the wires to the flasher (8) according to the schematic in Fig. 5. (Refer to FIG. 3 and 5)

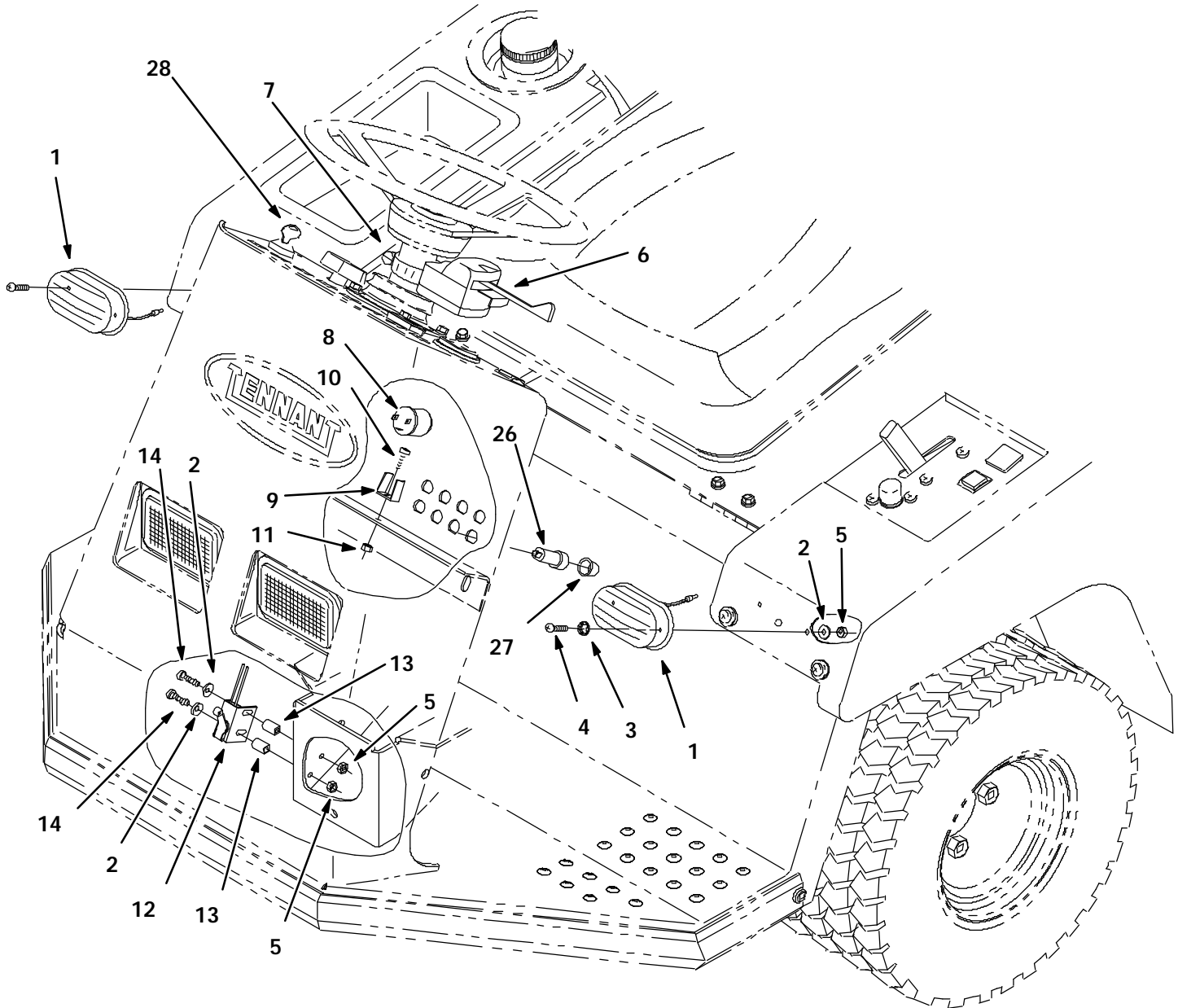


FIG. 3 - Road Package Kit (front)

3. Locate the brake switch (12) wires (31/GRN, 32/PUR, and 32A/PUR) tied up in the main harness under the dash panel. Connect the wires to the brake switch (12) according to the schematic in Fig. 5. (Refer to FIG. 3 and 5)

4. Connect the left, front light (1) to the wires (35/YEL and 13M/BLK). Connect the right, front light (1) to the wires (36/PUR and 13K/BLK)
5. Locate the circuit breaker (26) wires (2D/BRN and 31/GRN) tied up in the main harness under the dash panel. Connect the wires to the circuit breaker (26) according to the schematic in Fig. 5. (Refer to FIG. 3 and 5)

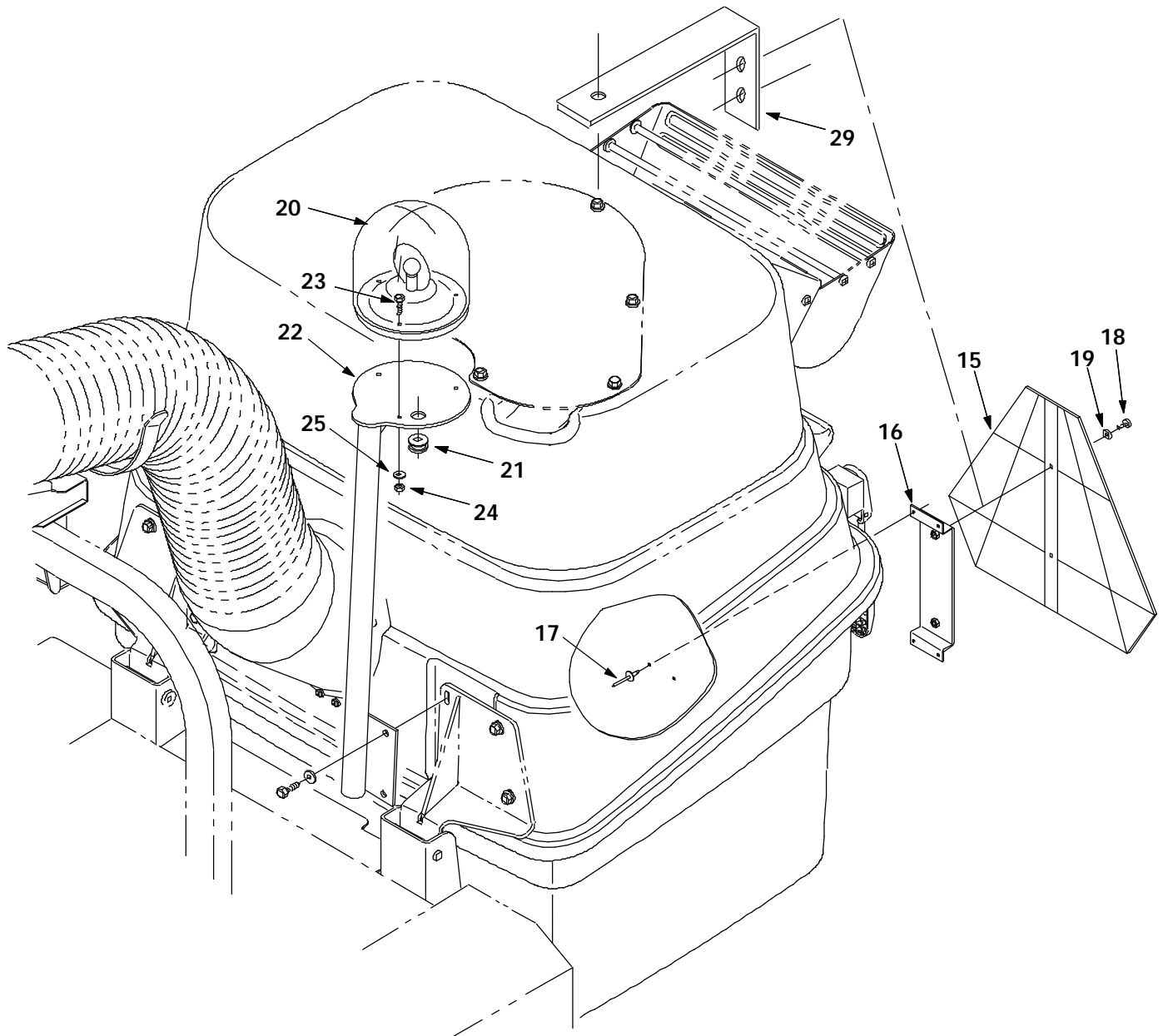


FIG. 4 - Road Package Kit (rear)

6. Locate the warning light (20) wires (25/YEL and 13S/BLK) tied up in the main harness near the front of the hopper. Connect the wires to the warning light (20) according to the schematic in Fig. 5. (Refer to FIG. 4 and 5)
7. Locate the indicator light (28) wires (32A/PUR and 13AB/BLK) tied up in the main harness under the dash panel. Connect the wires to the indicator light (28) according to the schematic in Fig. 5. (Refer to FIG. 3 and 5)
8. Operate the machine and check the road package kit for proper operation.

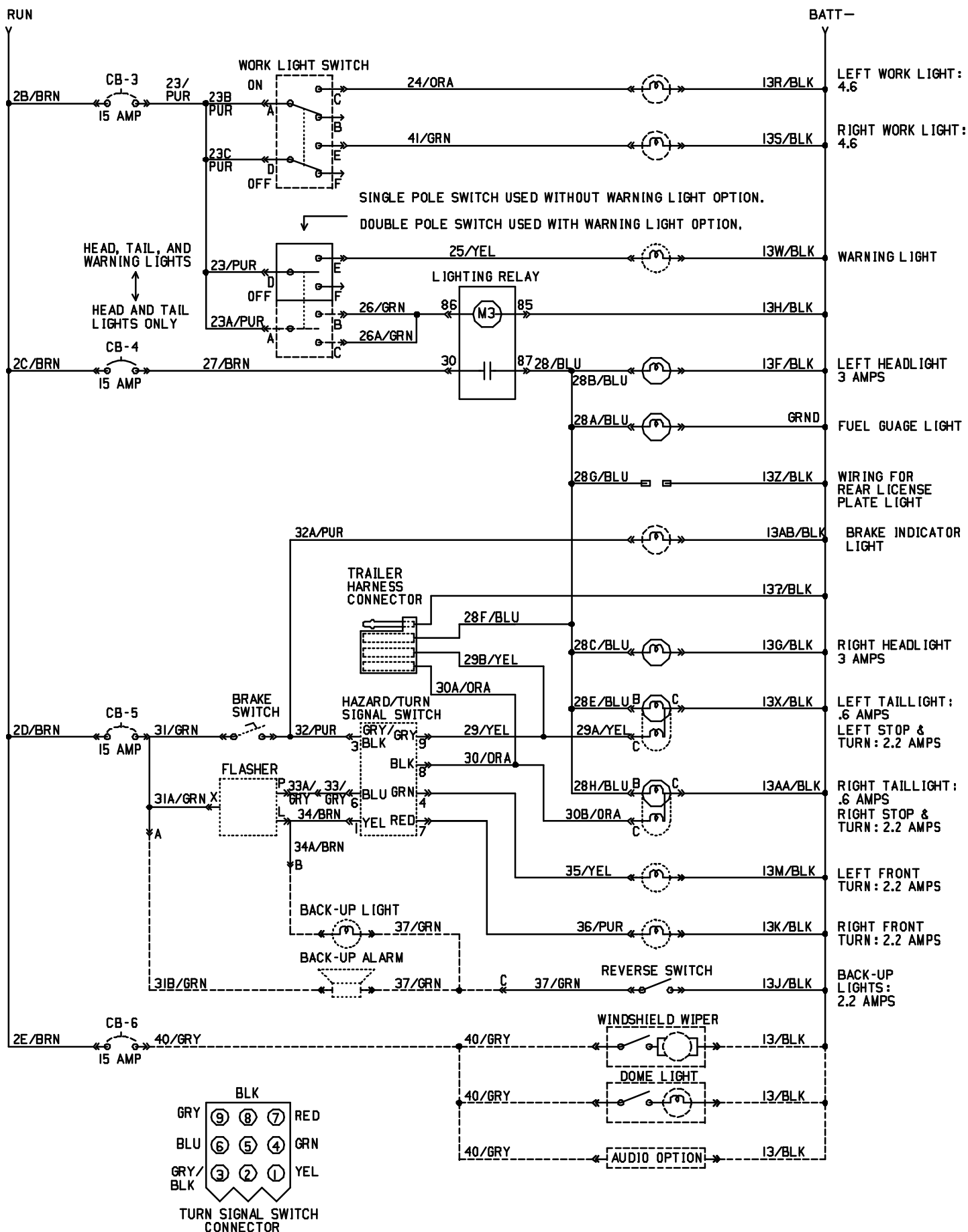


FIG. 5 - Schematic

BILL OF MATERIALS FOR ROAD PACKAGE KIT 367605

Ref.	Tennant Part No.	Machine Serial Number	Description	Qty.
	367605	(000000-) Road Package Kit, 4300	1
1	34848	(000000-) Light Assy Mark/Yel 12V- . A	2
	87948	(000000-) Lamp	1
2	01683	(000000-) Washer, Flat, #10 Ss	8
3	07514	(000000-) Washer, Lock, Int, #10, Ss	2
4	24196	(000000-) Screw, Pan, M05-0.8 X 20, Ss	4
5	09739	(000000-) Nut, Hex, Lock, M05-0.8, NI,Ss	6
6	60751	(000000-) Signal, Turn	1
7	22297	(000000-) Clamp, Wormdrive	1
8	31922	(000000-) Flasher	1
9	24576-1	(000000-) Bracket	1
10	06927	(000000-) Screw, Pan, M04-0.7 X 16, 4.8	1
11	02850	(000000-) Nut, Hex, Lock, M04-0.7, NI	1
12	367403	(000000-) Switch, Roller	1
13	360930	(000000-) Sleeve	2
14	17185	(000000-) Screw, Pan, M05-0.8 X 40, Ss	2
15	760980	(000000-) Label, Slow Moving Vehicle	1
16	367681	(000000-) Bracket, Mtg, Smv Label	1
17	68567	(000000-) Rivet, Pop	4
18	09145	(000000-) Screw, Pan, M06-1.0 X 16, 4.8	2
19	32490	(000000-) Washer, Flat, .25 Hard	2
20	768598	(000000-) Lamp Assy, Rotating, Halogen,	1
	768605	(000000-) Lamp, Halogen H1 12V 55W	1
	367946	(000000-) Lense, Rev, Amber	1
21	10632-9	(000000-) Grommet, Rubber	1
22	367765	(000000-) Bracket Assy, Light Mtg	1
23	12316	(000000-) Screw, Hex, M05-0.8 X 25, Ss	3
24	07784	(000000-) Nut, Hex, M05-0.8, Ss	3
25	01684	(000000-) Washer, Flat, .25 Ss	3
26	57803	(000000-) Circuitbreaker, 15 A	1
27	57751	(000000-) Boot	1
28	361075	(000000-) Indicator light	1
29	368269	(000000-) Bracket, SMV, Filter bag	1

TENNANT COMPANY
P. O. Box 1452
Minneapolis, MN 55440-1452